



2025

WUS Printed Circuit Co., Ltd.

Your PCB Factory

Website : [www.scmcpcb.com](http://www.scmcpcb.com) Email : [sales@scmcpcb.com](mailto:sales@scmcpcb.com)

# CATALOG

01



COMPANY

02



FACTORY

03



TEAM

04



PRODUCT



01



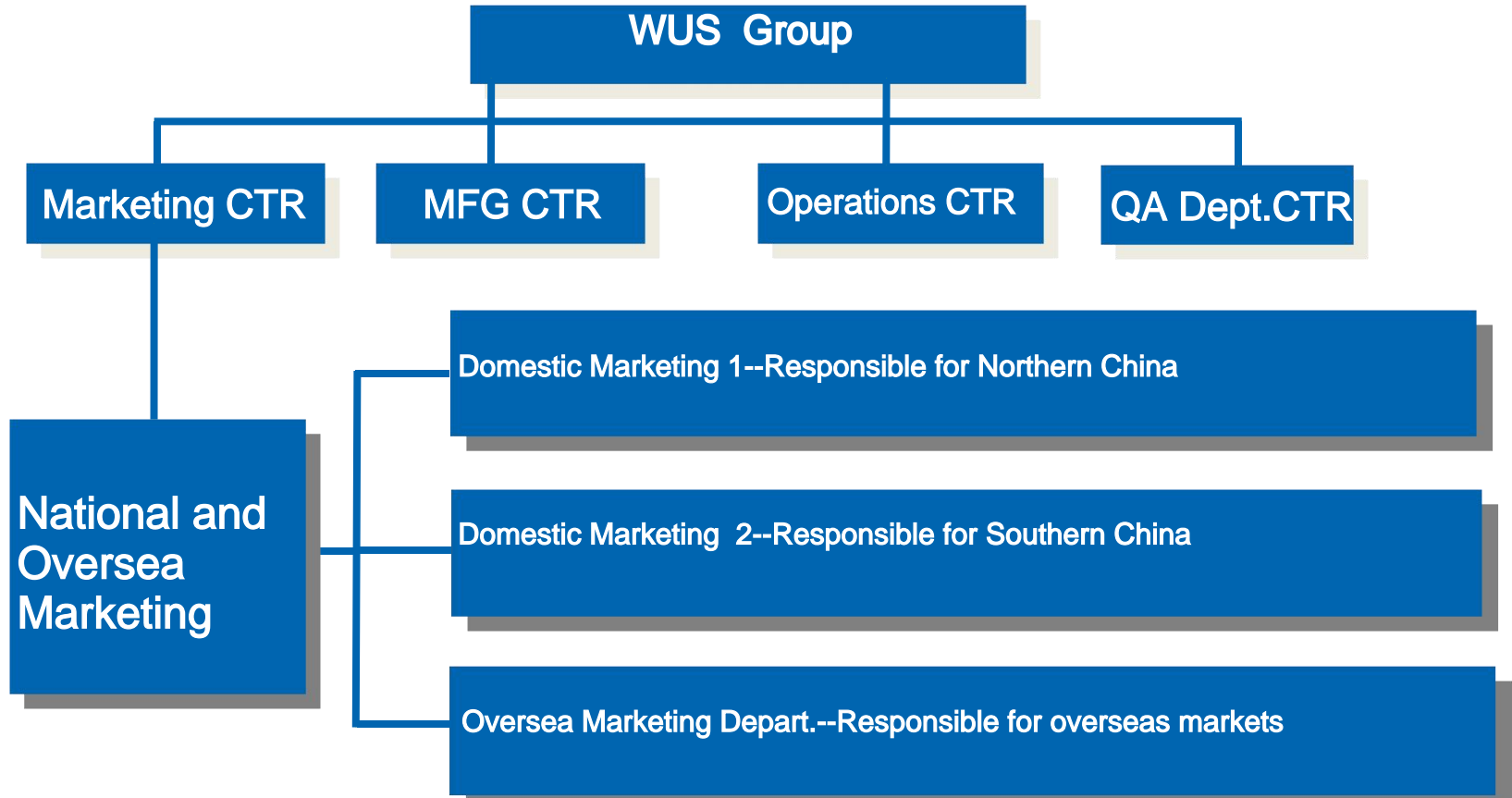
**COMPANY**

[www.scmcpb.com](http://www.scmcpb.com) [sales@scmcpb.com](mailto:sales@scmcpb.com)



# Company Profile

---





# Company Overview

---

**Established in 2001**

**Employee 230**

**Capacity 360,000 Square meter / year**

**1L,2L,Multilayer PCB,Metal Core PCB**



# Development History

**2001**

■ 2001

Establishing in 2001,  
obtained UL,  
Main products:  
2 Layers PCB and Multilayer  
PCB

**2017**

■ 2007年

Focus on overseas  
markets

**2018**

■ 2018年

Establishing sales  
office in The United  
States of America

**2005**

■ 2005年

Obtained IATF16949  
certificate, Main  
products: Multilayer  
PCB,HDI PCB

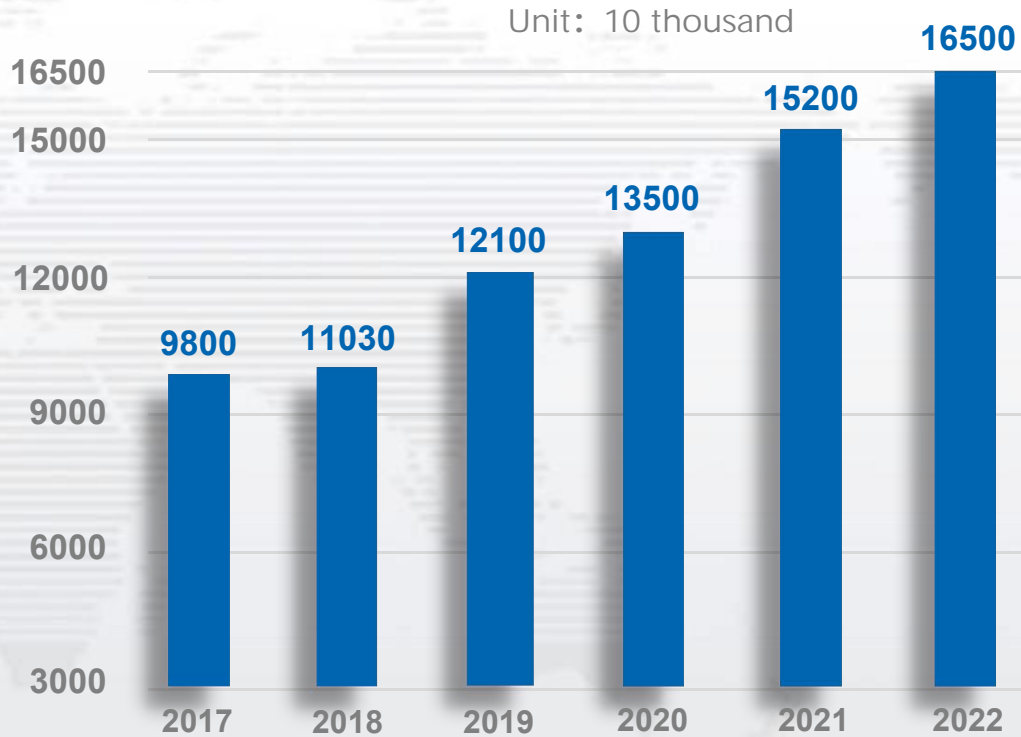
**2021**

■ 2021年

The group's annual  
production capacity exceeds  
30W square meters, and  
annual sales exceed 150  
million CNY .



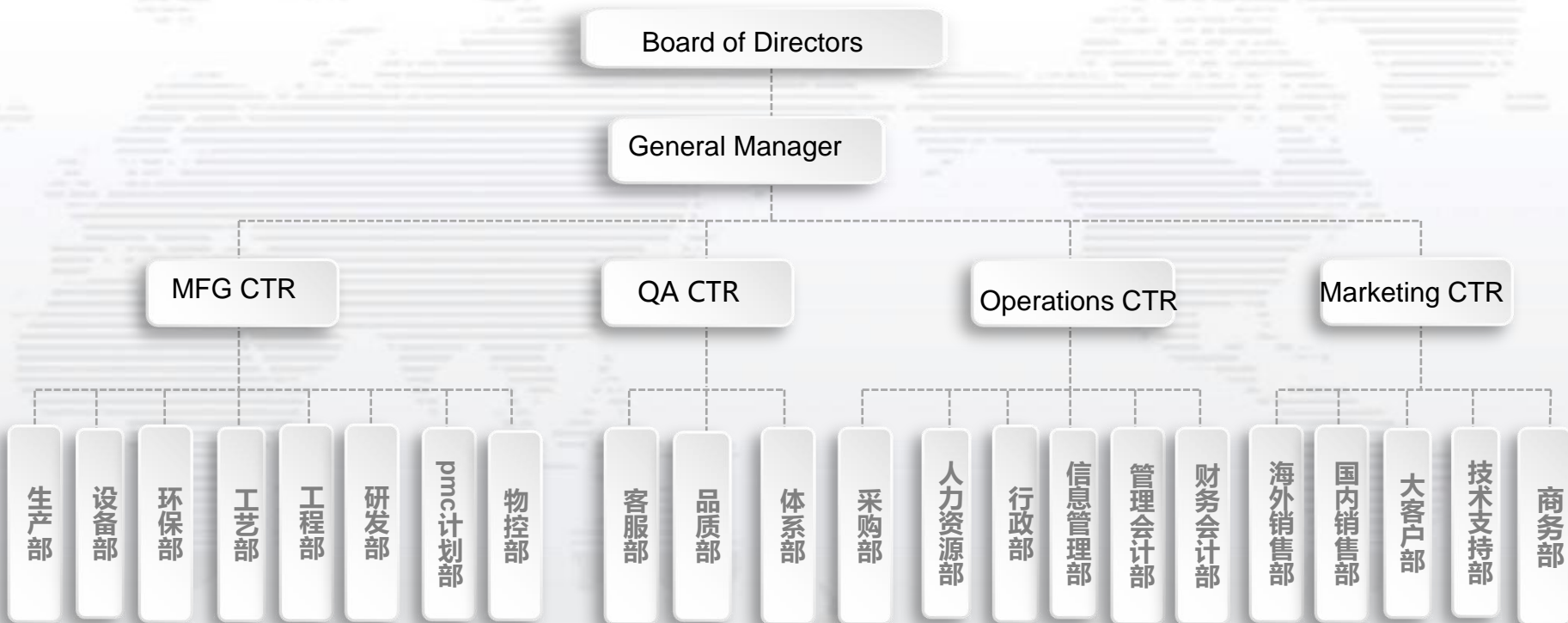
# Operation Achievement (last five years)



**165,000,000**



# Organization



## 生產車間

PRODUCTION WORKSHOP



鑽孔CNC車間  
Drilling CNC workshop



衝壓車間  
Stamping workshop



V-CUT車間  
V-CUT workshop



終檢綫  
Final inspection line



**Factory Area 18000 square meters**

**Employee 230**

**1L,2L,Multilayer PCB,MCPCB**

**Capacity 30000m<sup>2</sup> / month**



# MFG EQUIPMENT



CNC /Drilling



PTH



Plating line



PCB Lamination Line



Auto Film Pasting Machine



Exposure Machine



CCD Exposure Machine



Auto Spraying



Auto Printing Press



Silkscreen



CNC Machine



PCB Cleaning Line



# Testing Equipment



AOI Testing



Auto Open and Short Test M/C



Flying Test Machine



Chemistry Lab.



PCB Slice Grinder



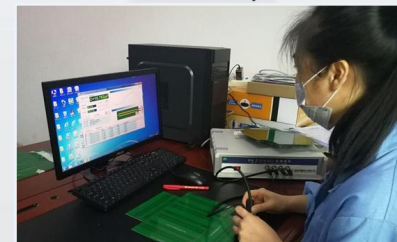
Microscope



Plating Thickness Test



Hi-pot Test



Impedance Tester



# Certificate

ONLINE CERTIFICATIONS DIRECTORY

For enhanced search functionality, please visit UL's [UL's Guide to Certificates](#).  
Click on a product designation for complete information.

Related Component  
WrgsPrmed-Ceey5

SHENZHEN YIFANG ELECTRONIC CO., LTD.  
SOUTH ON THE 5TH FLOOR OF 5TH BLDG  
NANGANG INDUSTRIAL ZONE OF ZHANGJING  
2ND COMMUNITY OF NANGANG ST BLDG  
SHENZHEN, GUANGDONG 518108 CHINA

Coat Width		Max	Coat	50%	Area	Substr	Oper	Max	Notes	C
Min	Edge	Min	DR	Diam	Limbs	Temp	Flame	UL794	T	
Type	mm(in)	mm(in)	mm(in)	mm(in)	C	sec	C	Class	DER	I
Mass laminated (multi-layered) printed wiring boards.										
YP-4	0.18 (0.007)	0.18 (0.007)	17 (0.67)	0.8	50.8 (2.0)	200	20	130	V-0	AB
Multi-layer printed wiring boards.										
YP-4	0.08 (0.003)	0.18 (0.007)	17 (0.67)	0.8	50.8 (2.0)	200	20	130	V-0	AB
Multi-layer printed wiring boards.										
YP-4	0.08 (0.003)	0.18 (0.007)	17 (0.67)	0.8	50.8 (2.0)	200	20	130	V-0	AB
Single Layer Metal Base Printed Wiring Board, employing metal base laminate.										
YP-5	0.13 (0.005)	0.20 (0.008)	34 (1.34)	56	50.8 (2.0)	200	20	130	V-0	A
Single Layer Metal Base Printed Wiring Board, employing metal base laminate with flame only recognition.										
YP-6	-	-	-	0.8	-	200	20	-	V-0	-
Single layer printed wiring boards.										
YP-2	0.08 (0.003)	0.18 (0.007)	17 (0.67)	0.8	50.8 (2.0)	200	20	130	V-0	AB

\* - CTI ratings is marked on individual boards

Impny name or trademark "E320003" or trademark or file number and type designation. May be followed to denote factory identification or burning test classification.

© 2018 UL LLC

When the UL Mark is on the product, or when the word "Environment" is included in the UL Mark, please search the [UL Environment Database](#) for additional information regarding the product's certification.

The appearance of a company's name or product in this database does not in itself assure that products so identified have been manufactured under UL's Follow-Up Service. Only those products bearing the UL Mark should be considered to be Certified and covered under UL's Follow-Up Service. Always look for the Mark on the product.

UL permits the reproduction of the material contained in the Online Certification Directory subject to the following conditions: 1. The Guide Information, Assemblies, Constructions, Designs, Systems, and/or Certifications (Items) must be presented in their entirety and in a non-misleading manner, without any manipulation of the data (or drawings); 2. The statement "Reprinted from the Online Certifications Directory with permission from UL" must appear adjacent to the reprinted material. In addition, the reprinted material must include a copyright notice in the following format: "© 2015 UL LLC."

UL Certificate

IMPROVED CERTIFICATIONS  
SEARCH TOOL REGISTER NOW

ZPMV8.E320003  
Wiring, Printed Certified for Canada - Component

Wiring, Printed Certified for Canada - Component

SHENZHEN YIFANG ELECTRONIC CO., LTD.  
SOUTH ON THE 5TH FLOOR OF 5TH BLDG  
NANGANG INDUSTRIAL ZONE OF ZHANGJING  
2ND COMMUNITY OF NANGANG ST BLDG  
SHENZHEN, GUANGDONG 518108 CHINA

Coat Width		Max	Coat	50%	Area	Substr	Oper	Max	Notes	C
Min	Com	DR	Diam	Limbs	Temp	Flame	UL794	T		
Type	mm(in)	mm(in)	mm(in)	mm(in)	C	sec	C	Class	DER	I
Single Layer Metal Base Printed Wiring Board, employing metal base laminate.										
YP-2	0.13 (0.005)	0.2 (0.008)	34 (1.34)	56	50.8 (2.0)	200	20	130	V-0	A
Multi-layer printed wiring boards.										
YP-2	0.06 (0.002)	0.18 (0.007)	17 (0.67)	0.8	50.8 (2.0)	200	20	130	V-0	AB

\* - CTI marking is optional and may be marked on the printed wiring board.

® trademark, or file number and type designation and the Recognized Component Mark for Canada, . May be followed by a suffix to denote factory identification or burning test classification.

© 2018 UL LLC

The appearance of a company's name or product in this database does not in itself assure that products so identified have been manufactured under UL's Follow-Up Service. Only those products bearing the UL Mark should be considered to be Certified and covered under UL's Follow-Up Service. Always look for the Mark on the product.

UL permits the reproduction of the material contained in the Online Certification Directory subject to the following conditions: 1. The Guide Information, Assemblies, Constructions, Designs, Systems, and/or Certifications (Items) must be presented in their entirety and in a non-misleading manner, without any manipulation of the data (or drawings); 2. The statement "Reprinted from the Online Certifications Directory with permission from UL" must appear adjacent to the reprinted material.

C UL Certificate

环境管理体系认证证书  
证书编号: 1693E20165R05

统一社会信用代码: 91440300789843013N  
注册地址: 中国·深圳市宝安区新得福街道二村园仔村二路17号壹邦  
邮政编码: 512020

生产地址: 中国·广东省深圳市宝安区沙井街道新二村工业区(邮政编码: 510050) 经营地址: 中国·广东省深圳市宝安区沙井街道沙井社区沙井社区沙井社区(邮政编码: 510000)  
建立环境管理体系获证号

CAT/T 24001-2016/ISO14001:2015《环境管理体系要求及使用指南》  
通过认证范围:

线路板的生产与销售所涉及的相关环境管理活动

颁证日期: 2023年03月29日  
有效期至: 2026年03月29日

中煤协联合认证(北京)中心  
北京市昌平区回龙观镇文华园11号楼1101室

赵志峰

MANAGEMENT SYSTEM CERTIFICATION  
CNAS CHINA

本证书在国家规定的各行政区域内有效, 获证方可在获证范围内使用。  
本证书通过定期监督审核保持, 与获证机构和获证产品同时使用方为有效。  
获证二年后可自愿申请复评或换证。  
认证证书可在获证网站 www.cncc.net.cn 上查询。  
证书国家认证认可监督管理委员会官方网站 www.cnca.gov.cn 上查询。

ISO 14001 Certificate

## Lead Time

Product Type 产品类别	Samples 样品		Mass Production 量产	
	Normal (常规)	Urgent (加急)	Normal (常规)	Urgent (加急)
Single Layer	4	3	7 ± 1	6 ± 1
Double Layer	6	5	10	8
4 Layers	9	7	16	11
6 Layers	12	8	18	13
8 Layers	18	14	30	23
10 Layers	20	16	35	26



# PCB Manufacturing Capabilities

## Capabilities

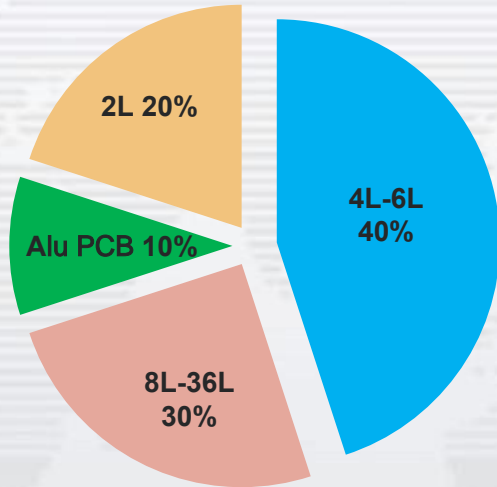
Layer	1-36	Min PCB thickness (2 Layers )	0.3mm
Max Panel Size	635×1120mm	Min PCB thickness(Multilayer)	0.4mm
Max Copper thickness	4 oz	Min inner layer thickness	0.1mm
Min Tracing	0.1mm		
Min Spacing	0.1mm	Min Hole Location tolerance	±0.075mm
Min Hole diameter	0.20mm	Min Hole diameter tolerance	±0.075mm
Bow and twist	≤ 0.75%	Min outline tolerance	±0.10mm
Impedance Tolerance	+/-10%	Graphic alignment tolerance	±0.075mm
hole copper thickness	25um		
Surface Treatment	LF HASL,HASL,ENIG,OSP,Immersion Silver,Gold finger		
Raw material	FR-4,High TG FR-4,HDI PCB,Halogen-Free FR-4,heavy copper FR-4,MCPCB		
Stander Leadtime	2L 5 calendar days,mass 7-10 days,24L-36L samples 12 days,mass 12-16 days		





# Production

---



Aluminum PCB **10%**

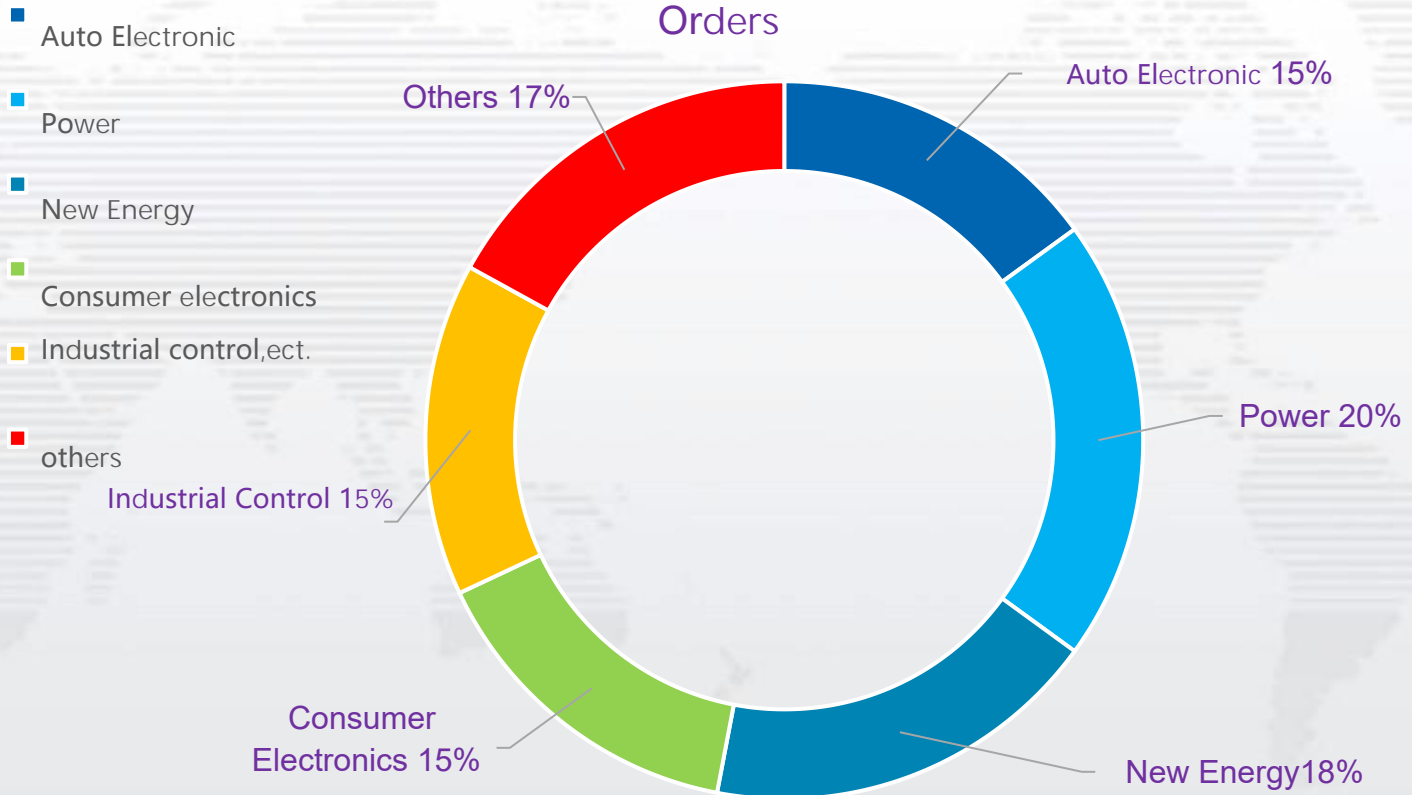
2L **20%**

4L-6L **40%**

8L-36L **30%**



# Product Categories





# China Main Partners

---

LED Lighting



Industrial Control



Auto Electronic



Consumer Electronics

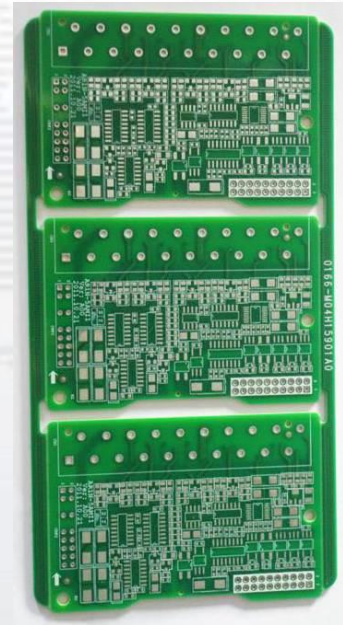
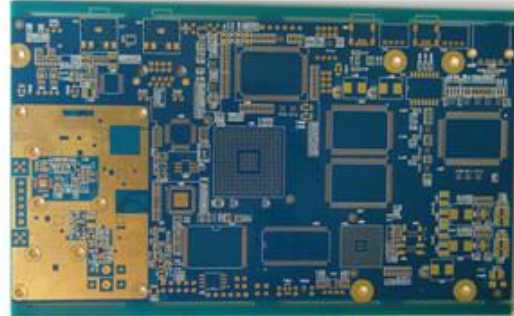


Medical & Others





# Production



## Industrial Control

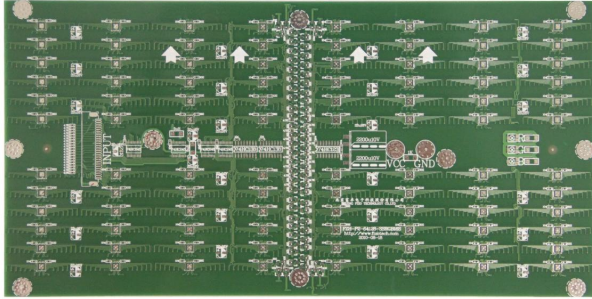
Industrial control PCB characteristics: heavy copper, the hole copper thickness more than 25U ’

Application products: frequency converters, UPS power supplies, robots, cutting and welding machines, high-speed railway equipment, etc.

[www.scmcpb.com](http://www.scmcpb.com) [sales@scmcpb.com](mailto:sales@scmcpb.com)



# Production

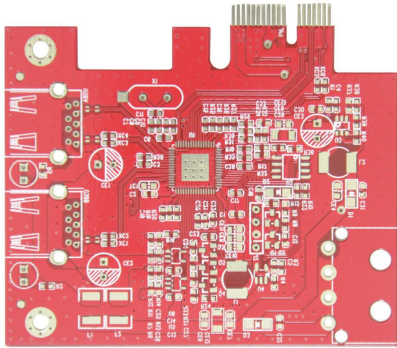


## Communication

Communication PCB features: blind buried vias ,

HDI, impedance control, half holes, metal edging, precision circuits

Application products: routers, mobile phone boards, tablets ect.

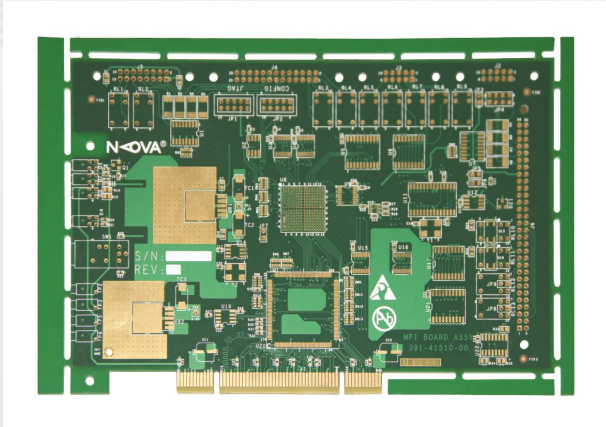
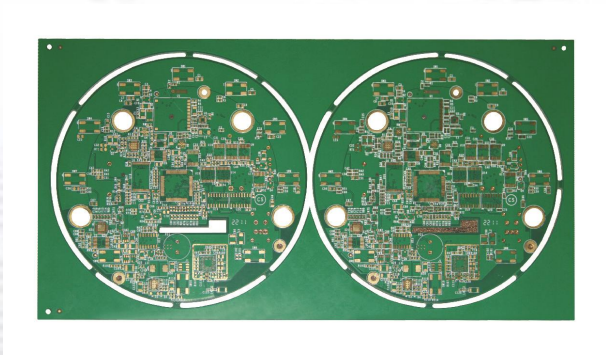


[www.scmcpb.com](http://www.scmcpb.com)

[sales@scmcpb.com](mailto:sales@scmcpb.com)



# Production



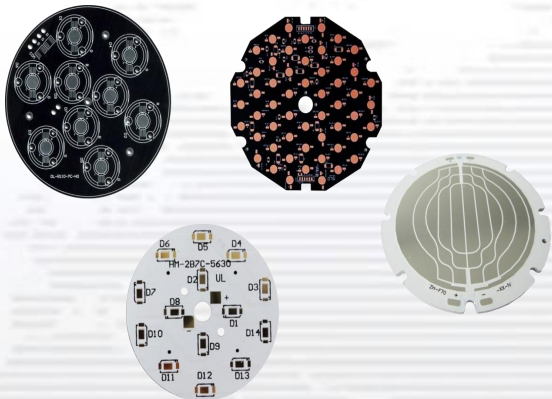
## Digital security

Security PCB features: precision circuitry, impedance control, high hole density, small aperture ratio

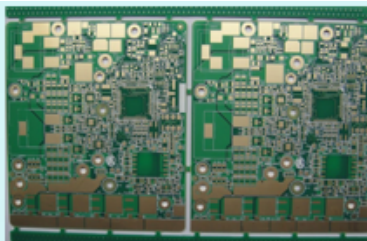
Application products: video monitors, cameras, NVR. ect.



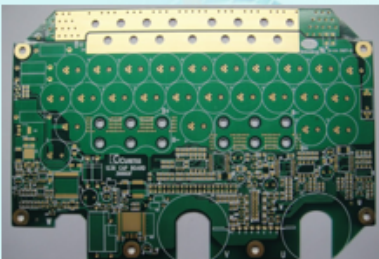
# Production



**Aluminum PCB for LED**

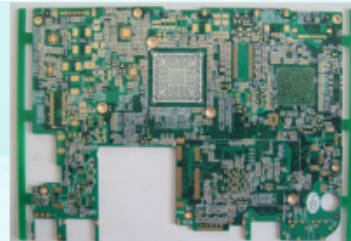


**四层太阳能(树脂塞孔)线路板  
4 layers ENIG**

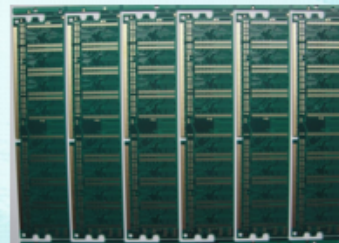


**四层内、外层5OZ厚铜线路板  
4 layers 5 OZ**

**Multilayer PCB**



**六层平板电脑主板线路板  
6 layers For PC**



**八层内存条线路板  
8 layers Computer memory board**

**Multilayer PCB**

## India Main Customers





## Customers

---





# Development Vision



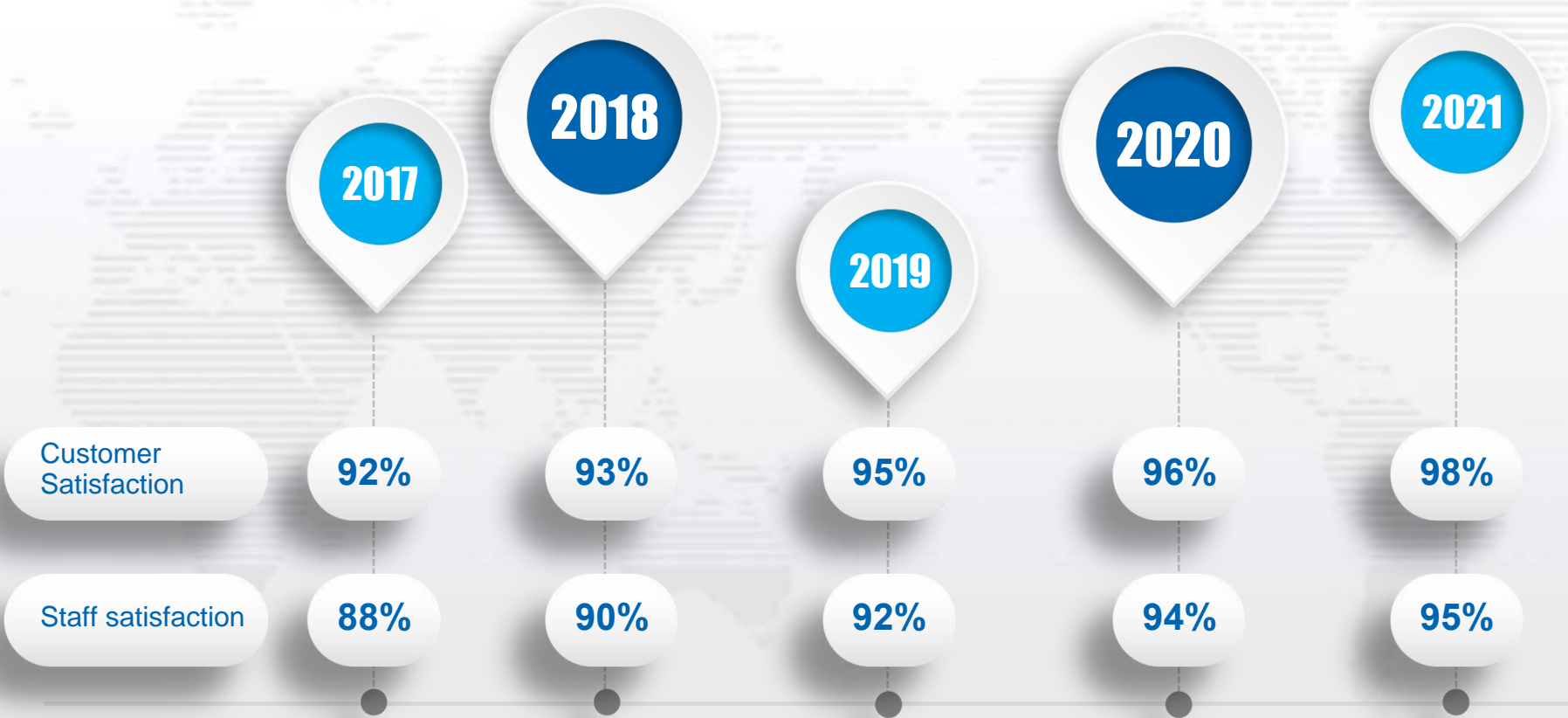


## Operational Development Goals

Items	2020	2021	2022	2023	2024
Annual sales (RMB/million)	135	152	165	180	200
Annual Profit (RMB/million)	12	12.7	14	17	18.7
Monthly Capacity(sq m)	28,000	30,000	32,000	34,000	36,000
On-time Delivery Rate	93%	95%	96%	97%	98%
Average Layers	10/L	12.3/L	16.6/L	20.8/L	24.2/L



# Development Competitiveness Plan







Thank

you